



Presentation of ERRIA A/S

Global 'One stop shop' for the Maritime World

Company presentation with the main focus on ERRIA Consulting



DENMARK

PORTUGAL

VENEZUELA

BRAZIL

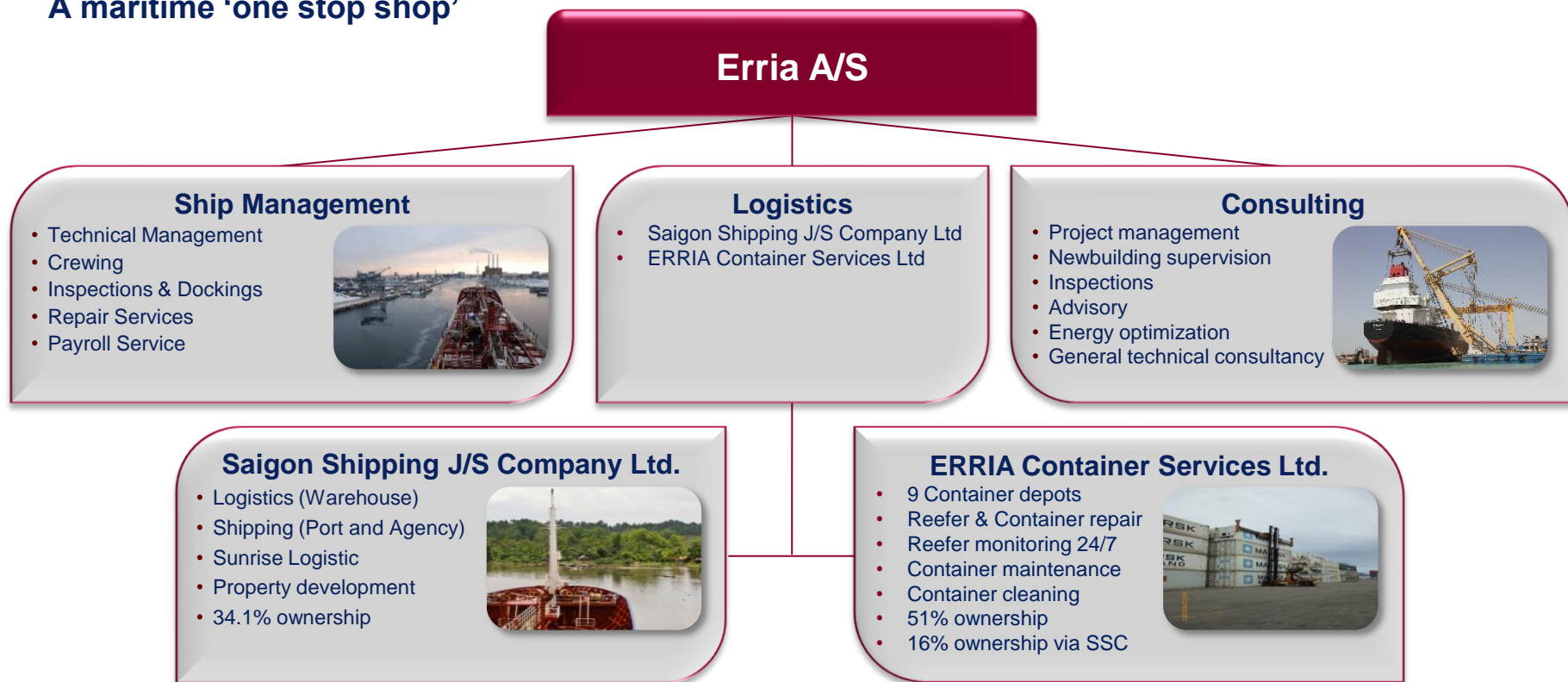


CHINA

VIETNAM

Business area overview

A maritime 'one stop shop'



Affiliated company
ERRIA Latinoamérica S.A.



DENMARK

PORTUGAL

VENEZUELA

BRAZIL

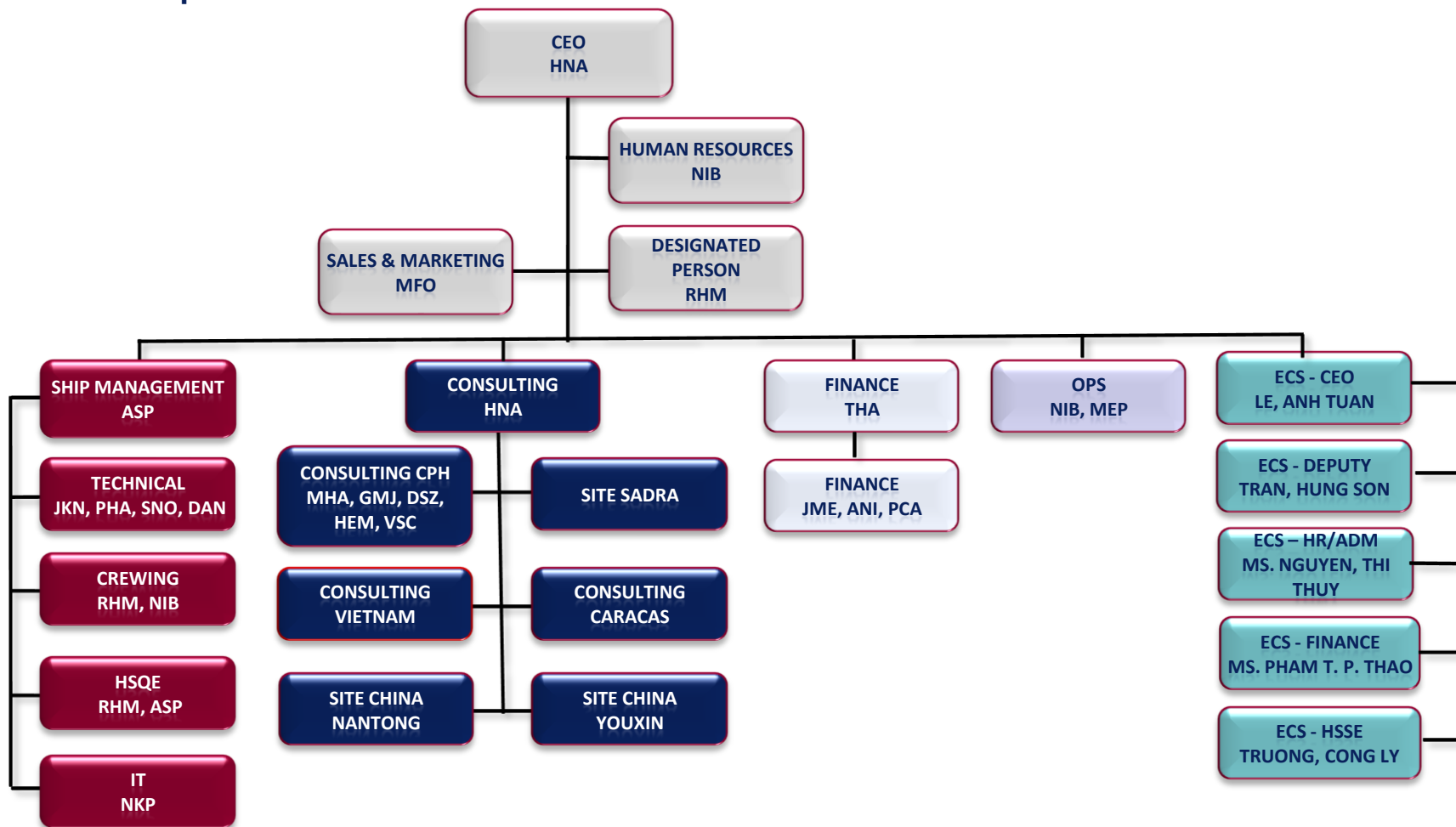


CHINA

VIETNAM

Organizational diagram

ERRIA Group



DENMARK

PORTUGAL

VENEZUELA

BRAZIL



CHINA

VIETNAM

Business areas Consulting

We sell know-how, not hardware. ERRIA is your independent partner in shipping.

Design Consulting

- Drawing plan approval
- Technical documentation and specifications
- Manuals in connection with initiating operation of new buildings
- Implementation of new rules and requirements on all ship types

Project Management

- Supervision of new building projects and large reconstruction projects
- Review and approval of supplier offers
- Preparation of specifications and inspections in connection with large restructurings and upgrades
- Purchase and Sales inspections

Documentation

- Review and/or preparation of new building specifications
- Review of new building contracts
- Retrieval and comparison of tenders on new buildings, as well as restructurings

Other Maritime Consulting

- Acquisition/sales inspections
- Shipyard inspection and evaluation
- Pre-vetting inspections for tankers in connection with new building projects
- Energy Optimization (Inspections)
- Trim Optimization
- Energy optimization (SEEMP)
- Ballast Water Management Plan (BWMP)
- (Pre-)Time charter inspections
- Pre-BareBoat inspections
- Condition inspections
- Technical inspections
- Flag state inspections
- Damage inspections
- Vessel docking including preparing of specification and Yard tender documentation
- Procurement and expedition control including, but not limited to Factory Acceptance Test.



DENMARK

PORTUGAL

VENEZUELA

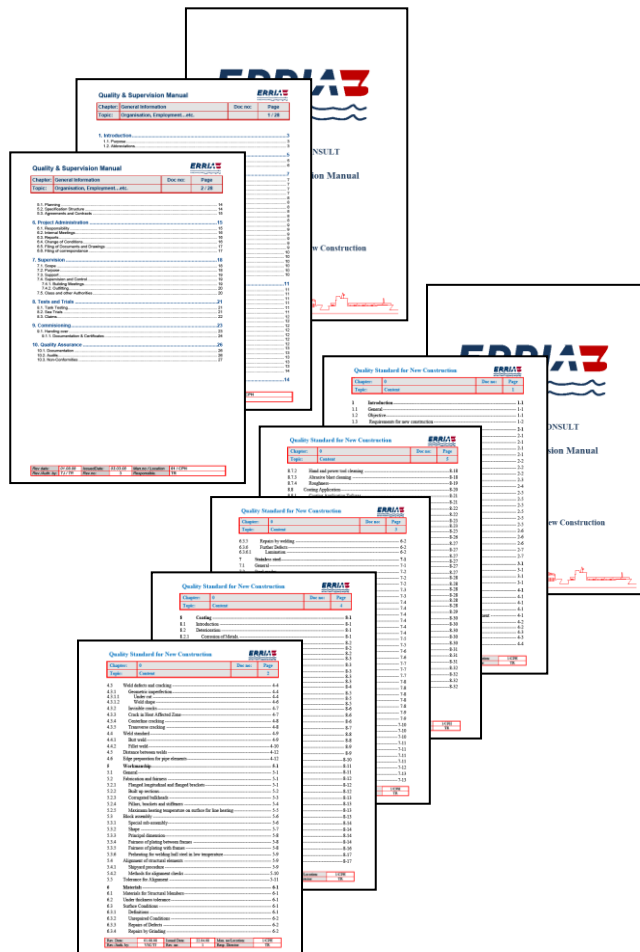
BRAZIL



CHINA

VIETNAM

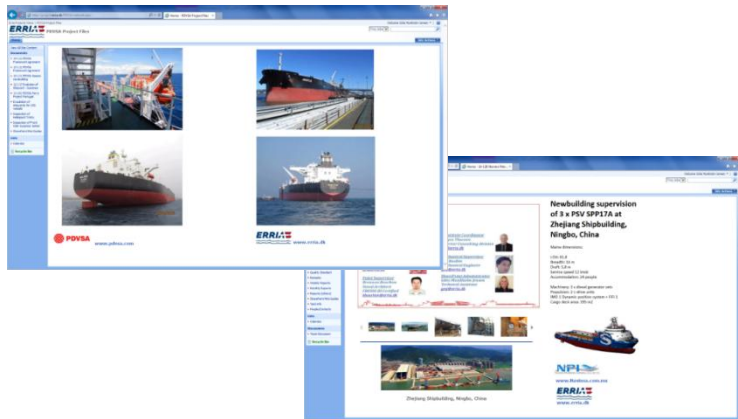
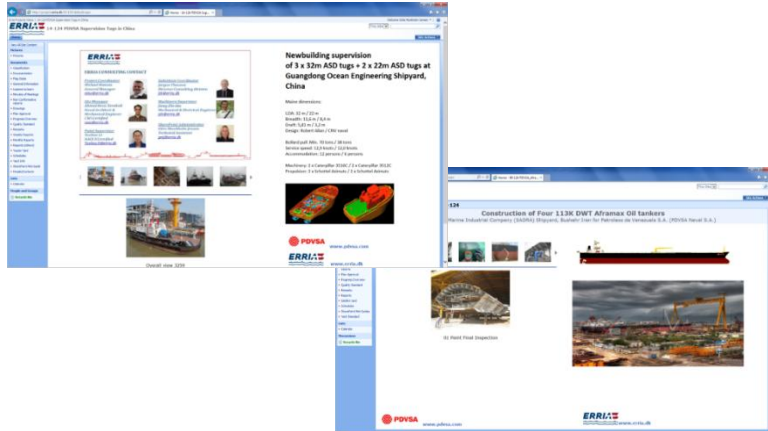
Quality & Supervision



- More than 25 years of experience in ERRIA Consulting is collected in our Quality & Supervision manual
- General Information Vol.1
 - Site office set-up
 - Project description
 - Project administration
 - Supervision
 - *Contract and specification*
 - *Procedures (e.g. sea trial program)*
- Quality standard for New Construction Vol.2
 - Inspections
 - Qualification of personnel and procedures
 - Welding performance
 - Workmanship
 - Materials
 - Stainless steel
 - Coating



SharePoint



- SharePoint is a file sharing portal that can be used to increase the efficiency of business processes and improve team productivity.

SharePoint gives people access to important information and helps them to stay connected across organizational and geographical boundaries.

- Types of information
 - Activity & Progress Reports
 - Classification
 - Drawings
 - Lesson to Learn
 - Minutes of Meetings
 - Pictures
 - Quality Standard
 - Remarks
 - Reports
 - Schedules
 - Specification



DENMARK

PORTUGAL

VENEZUELA

BRAZIL



CHINA

VIETNAM

Marine Energy Optimization services

What is FAKE and what are FACTS

- ERRIA Consulting supports ship owners with advice and fact finding in relation to Marine Energy Optimization (MEO), Energy survey on-board & Ship Energy Management plans.
- What is fake and what is fact, what is the pay back time, and will it be applicable to install it on-board on existing vessels and/or on new buildings. These are among the often raised questions, which ERRIA Consulting as a third party advisor can clarify for our customers, including the following headlines:
 - SEEMP Ship Energy Management Plan (*rules and regulations and yearly audit*)
 - Trim Optimization (*we do what we always do, why change this*)
 - Cooling water systems (*the expensive three way valve*)
 - Ventilation systems (*engine room and accommodation*)
 - Energy survey on existing ships (*what is fake and what is fact*)
 - ECO devices offered by Yards in relation to New buildings, at extra cost
 - Important to analyze the influence of introducing fuel oil saving devices on systems on-board any vessel, as all systems are related and influence each other.



DENMARK

PORTUGAL

VENEZUELA

BRAZIL



CHINA

VIETNAM

Inspections and surveys

Ship-owners' independent partner.

- In almost all aspect of inspections, ship owners benefit of using a third party independent partner to perform the Inspection
 - Save time for own team so they can focus on the operation.
 - Get the right background to take decisions and make changes.
 - Independent survey report that can be used on a later stage in case it's needed.
- Shipyard inspection and evaluation.
- Condition survey Sale/Purchase.
- Ship inspection, third party inspection as support to management and inspectors
- On/off hire surveys, documentation with full picture documentation
- Support to sea trials
- Condition survey on new buildings
- Vendors inspections worldwide (expediting)
- Shop test for major equipment
- Condition survey on Mega blocks for e.g. offshore installations
- Pre vetting inspection on tankers
- Energy Surveys

The above covers all types and sizes of vessels such as, but not limited to Tug boats, PSV, Hotel platforms/vessels, oil & Chemical tankers, LPG tankers, ferries, container vessels, and dry cargo vessels.



DENMARK

PORTUGAL

VENEZUELA

BRAZIL



CHINA

VIETNAM

The following pages present some of the New building projects ERRIA Consulting are involved in or has been in the past.

Let Erria A/S be your first choice in your next project and we will add value to your business.



VENEZUELA

BRAZIL



4 AFRAMAX Tankers for Venezuelan Owner

❖ Tanker dimension:

- Length 250.00 metres
- Breadth moulded 44.00 metres
- Depts. moulded 21.00 metres
- Max draft moulded 14.8 metres
- Deadweight 113.000 tons
- Cargo capacity 129.500 Cubic meters
- Main propulsion MAN B&W 7S60 MC-C
- Speed about 15 knots at 80% MCR and with 15% sea margin
- Classification Germanischer Lloyds

❖ ERRIA

- Contract and specification review.
- Newbuilding supervision on owner's behalf covering the following qualifications:
 - Site Surveyor Engineer
 - Site Surveyor Electrician
 - Site Surveyor Paint Frocio Certified
 - Site Surveyor Steel Naval Architect
 - Project Control
- Quality Control
- Purchase control and approval of technical agreements.
- Drawing review and approval.
- Document control.
- Inspection of Maker's facilities and shop test for major equipment.



DENMARK

PORTUGAL

VENEZUELA

BRAZIL



CHINA

VIETNAM

3 Platform Supply Vessels (PSV) for Mexican owner



❖ PSV Dimensions:

- Length 61.80 metres
- Breadth moulded 14.00 metres
- Max draft moulded 5.80 metres
- Accommodation 24 people



❖ ERRIA

- Newbuilding supervision on owners behalf with the following positions
 - Site Manager Engineer
 - Site surveyor Paint
 - Site surveyor steel Naval Architect
- Quality support to yard and owner
- Ensure the vessels are delivered according to specification and contract
- Purchase control and approval of technical agreements
- Sea trial and final taking over from shipyard
- Document control
- Transshipment from China to Mexico



1 Chemical Tanker for Argentinian Owner

❖ Tanker dimension:

- Length 110.00 metres
- Breath moulded 18.20 metres
- Depts. moulded 7.60 metres
- Max draft moulded 4.88 metres
- Deadweight 4.980 tons
- Cargo Capacity 6.000 Cubic meters, IMO Type II
- 2 x Main propulsion 6KDM26 MCR
2 x1680kW
- Speed about 12 knots with 15% sea margin
- Classification Bureau Veritas

❖ ERRIA

- Contract and specification review.
- Newbuilding supervision on owner's behalf covering the following qualifications:
 - Site Surveyor Engineer
 - Site Surveyor Electrician
 - Site Surveyor Paint Frocio Certified
 - Site Surveyor Steel Naval Architect
 - Project Control
- Quality Control
- Purchase control and approval of technical agreements.
- Drawing review and approval.
- Document control.
- Inspection of Maker's facilities and shop test for major equipment.



DENMARK

PORTUGAL

VENEZUELA

BRAZIL



CHINA

VIETNAM

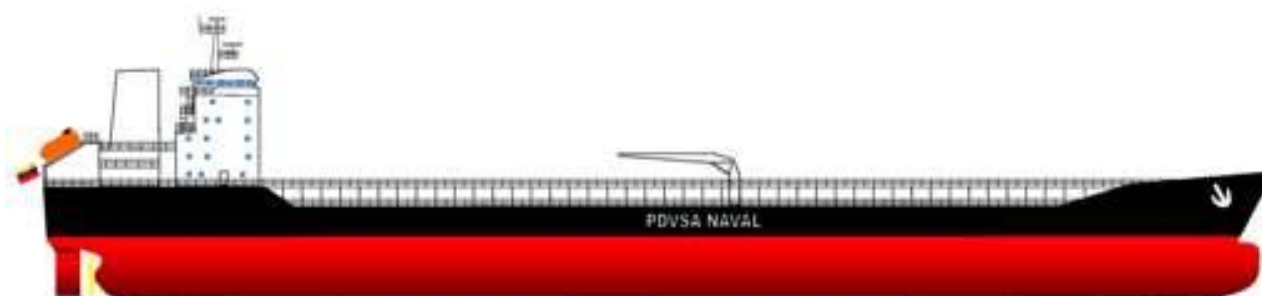
2 ASPHALT Tankers for Venezuelan Owner

❖ Tanker dimension:

- Length 188.00 metres
- Breath moulded 28.00 metres
- Depts. moulded 13.00 metres
- Max draft moulded 9.5 metres
- Deadweight 27.000 tons
- Cargo capacity 23.000 Cubic meters
- Cargo heating 200 Degrees Celsius
- Non-structural tanks
- Main propulsion MAN B&W 6S50MC-C8
- Speed about 15 knots at 80% MCR with 15% sea margin
- Classification Bureau Veritas

❖ ERRIA

- Contract and specification review.
- Newbuilding supervision on owners behalf covering the following qualifications:
 - Site Surveyor Engineer
 - Site Surveyor Electrician
 - Site Surveyor Paint Frocio Certified
 - Site Surveyor Steel Naval Architect
 - Project Control
- Quality Control
- Purchase control and approval of technical agreements.
- Drawing review and approval.
- Document control.
- Inspection of Maker's facilities and shop test for major equipment.
- Design update and design calculation



DENMARK

PORTUGAL

VENEZUELA

BRAZIL



CHINA

VIETNAM

5 Tug boats for Venezuelan owner



❖ Tug Dimensions:

- Length 32.00 metres
- Breath moulded 11.60 metres
- Bollard pull 70 ton
- Accommodation for 12 persons

❖ ERRIA

- Newbuilding supervision on owner's behalf with the following positions:
 - Site Manager Engineer/Electrician
 - Site Surveyor Paint
 - Site Surveyor Steel Naval Architect
- Quality support to shipyard.
- Ensure the vessels are delivered according to specification and contract.
- Purchase control and approval of technical agreements.
- Drawing review and approval.
- Sea trial and final taking over from Yard
- Document control

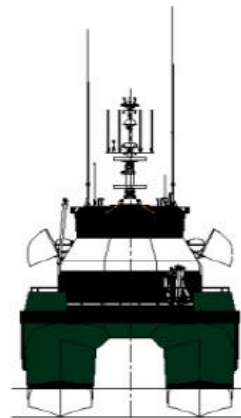
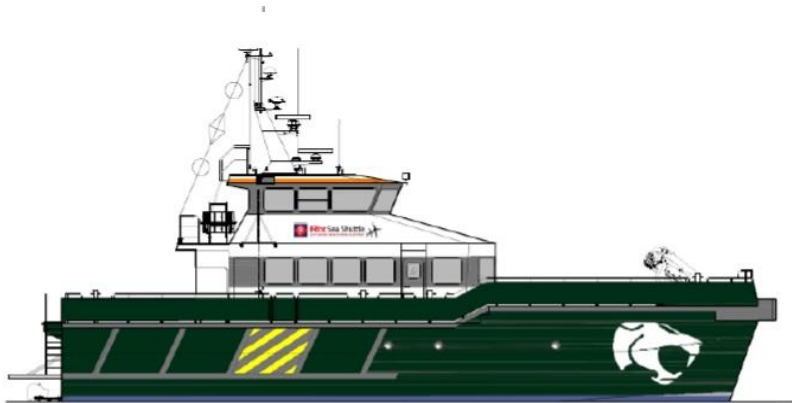


Construction supervision of a Wind Farm Support Vessel in Vietnam for British customer

- ❖ The ship is a 26 m aluminum catamaran intended for the carriage of 24 technicians and limited cargo to offshore wind farms.
- ❖ Propulsion is provided by two MAN diesel engines with two Hamilton waterjets.
- ❖ The vessel will be operated in Coastal Waters in Northern Europe up to 150 n.m from shore.

❖ ERRIA

- Sea trial support to owners.
- Preparation of nonconformity list for new building before vessel was ready for delivery.



DENMARK

PORTUGAL

VENEZUELA

BRAZIL

CHINA

VIETNAM

Offshore support vessel for Mexican Owner

❖ Vessel dimension:

- Length 85.00 metres
- Breadth moulded 22.00 metres
- Draft. 6.30 metres
- Total accommodation for 182 persons
- 100 ton main crane

❖ ERRIA

- Sea trial support to owners in China.
- Preparation of nonconformity list for new building before vessel was ready for delivery.



DENMARK

PORTUGAL

VENEZUELA

BRAZIL



CHINA

VIETNAM

Bangladesh: Ro-Pax Ferry for Danish Owner



❖ Ferry Dimensions:

- Length 49.80 metres
- Breadth moulded 11.20 metres
- Depth moulded on car deck 3.40 metres
- Max draft moulded 2.25 metres
- Gross tonnage 499 tons
- Passengers 149
- Cargo capacity cars/lorries 111 ton

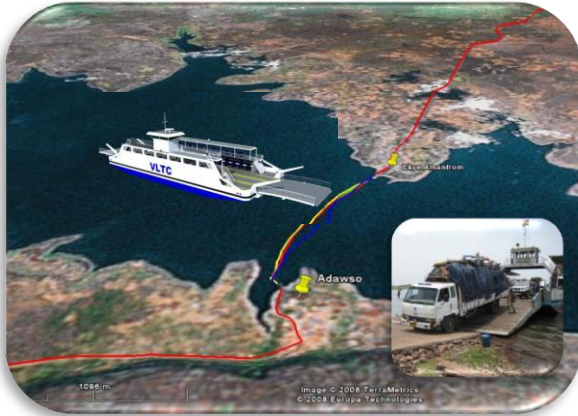


❖ ERRIA

- Newbuilding supervision on owner's behalf with the following positions:
 - Site Manager Engineer
 - Site Surveyor Electrician
 - Site Surveyor Paint
 - Site Surveyor Steel Naval Architect
- Quality support to yard.
- Purchase control and approval of technical agreements.
- Drawing review and approval.
- Document control



Ghana: Ro-Pax Ferry for VLTC, Local Government



❖ Ferry Dimensions:

- Length 49.80 metres
- Breadth moulded 11.20 metres
- Depts. moulded on car deck 3.40 metres
- Max draft moulded 2.25 metres

❖ ERRIA

- Feasibility study of the infrastructure on lake Volta and presentation of solutions.
- Port and ramp facilities on the ferry crossing.
- Project management, including bidding documentation for ferries, renewal of floating dock, as well as terminal building and ferry ramps.
- Newbuilding supervision on owner's behalf with the following positions:
 - Site Manager Engineer
 - Site Surveyor Electrician
 - Site Surveyor Paint
 - Site Surveyor Steel Naval Architect
- Quality support to yard/contractor.
- Purchase control and approval of technical agreements.
- Document control.
- Ferry design including all class approved drawings





Denmark: New building Supervision on two inspection vessels



❖ Dimensions:

- Length 71.80 metres
- Bread moulded 14.60 metres
- Max draft moulded 4.95 metres
- Further information classified

❖ ERRIA

- Supervision of steel structure
- Support for classification society
- Project management control at the shipyard
- Drawing review of steel structure.



DENMARK

PORTUGAL

VENEZUELA

BRAZIL



CHINA

VIETNAM

Offshore installations

- GRT (Holland) 4 x 300 feet Jack-up rigs Hull structure, Painting, Mechanical & Electrical DSIC Offshore Branch China
- GRT (Holland) 2 x 300 feet Jack up rigs Hull structure, Painting, Mechanical CPLEC Offshore yard Panjin China
- MPF (Norway) 1 x FPDSO Full Supervision of hull structure in Dalian COSCO Shipyard China
- CONSAFE (Sweden) 1 x semisubmersible Accommodation upgraded from an old drilling rig to floatel Yantai Raffles China
- MYKLEBUSTHAUG OFFSHORE (Norway) 2 x Submersible offshore barges Dalian Old Shipyard Branch Changxing Island
- MODEC (Japan) 1 x FSO hull structure, piping and painting in Yantai Raffles China
- UGLAND Construction (Norway) 2 x Submersible Offshore Barges Dalian Old Shipyard Branch Changxing Island
- OCEAN RIG (Norway) 4 x Semisubmersible Bare deck structure Management, hull, and painting Dalian New Shipyard China



DENMARK

PORTUGAL

VENEZUELA

BRAZIL



CHINA

VIETNAM

Contact information

Head Office

Erria A/S
Amager Strandvej 390, 2nd
DK-2770 Kastrup, Denmark

Phone: +45 3336 4400

Fax: +45 3336 4401

Website: www.erria.dk

Email: info@erria.dk



DENMARK

PORTUGAL

VENEZUELA

BRAZIL



CHINA

VIETNAM