

# NAUTICAST B2

## AIS Class B Transponder

The complete AIS package for leisure craft & other non-SOLAS vessels

### Professional quality meets superb design

The Nauticast B2 is a fully certified class B AIS exceeding all relevant specifications. Developed and manufactured in Austria it features a striking and practical design with a detachable mounting plate. It will integrate seamlessly into any marine network with various connectivity options. Connected to a Nauticast W1 WiFi server it will also stream data to laptops, tablets, mobiles or other WiFi devices.

### Complete set including software

The set includes a GPS and VHF antenna with mounts and antenna, power and data cables. Our Link2AIS Software (for Windows) makes device configuration easy. Link2AIS and a laptop allow you to monitor AIS-equipped marine traffic in list format and as chart overlay. The Nauticast B2 works with various popular charting applications like OpenCPN that support serial or WiFi AIS connections.



[www.nauticast.com/en/cms/b2](http://www.nauticast.com/en/cms/b2)



**Type  
Examination  
Certificate**  
4542/001/4322808/14



**USCG approval**  
165.156/23/0

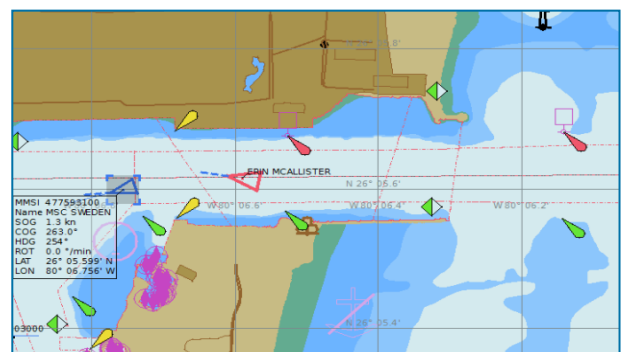


**FCC Equipment  
Authorization**  
2AEIINAUTICASTB2

### Other main features

- Class A like reception quality
- Robust hardware and electronics
- RS232/RS422 (NMEA 0183): Connect to chart plotter, relais and more
- USB interface for PC link (Link2AIS software)
- Silent Mode
- 12-24 VDC power supply
- 2 year manufacturer warranty

### Link2AIS Software (included in set)



### Nauticast GmbH

Lützowgasse 12-14 / 3.OG  
1140 Vienna, Austria



**qualityaustria**  
**SYSTEM CERTIFIED**  
ISO 9001:2015 No.12815/0

T +43 1 5237 237 - 0  
F +43 1 5237 237 - 150  
office@nauticast.com  
[www.nauticast.com](http://www.nauticast.com)

## Specifications & Order Information

### Technical Specifications

■ <b>Model</b>	<b>Nauticast B2</b>	■ <b>VHF Rx:</b>	2 AIS Receivers 1 DSC Receiver Frequency 156–162MHz Sensitivity @ -111dBm < 20% PER
■ <b>Size:</b>	195x145x35mm	■ <b>Interfaces:</b>	RS232, RS422, USB
■ <b>Power:</b>	12VDC (24VDC) 3W avg. consumption 12W peak consumption 1A (0,5A) peak current	■ <b>GPS:</b>	Internal Receiver 48 Channels 1 Hz Update rate 5V DC antenna feed IEC61108-1 compliant
■ <b>Environmental:</b>	"Protected" (EC 60945-Ed.4) -15 °C to 55 °C	■ <b>5 LEDs:</b>	Single or multicolour, indicating the operational and error status
■ <b>VHF Tx:</b>	1 Transmitter Frequency 161-162 MHz Output power 2W nominal		

### Order Information

Purpose	Description	Prod. No.
<b>Nauticast B2 (complete set)</b>	Nauticast B2 device , NMEA0183 data cable 1.5m (300 1012), power cable, USB cable, VHF whip antenna with mount & 5m cable, GPS Antenna with mount & 5m cable, Link2AIS Software & documentation (USB card), manual	300 1001
<b>Nauticast B2 (device only)</b>	Nauticast B2 device, NMEA0183 data cable 1.5m (300 1012), power cable, USB cable, Link2AIS Software & documentation (USB card), manual	300 1020
<b>Interface</b>	Data cable for B2 3m (RS232, RS422, Alarm out, LED out for chart plotters/NMEA devices, relais etc.)	300 1004
	Data cable for B2 1.5m (RS232, RS422, Alarm out / for chart plotters/NMEA devices, relais etc.)	300 1012
	Alarm relay for Nauticast B2	300 1009
<b>WiFi</b>	Nauticast W1 WiFi Server integrates into existing networks or creates own WiFi network (incl. power cable and manual)	300 2001
	As above incl. 100-230V AC power transformer	300 2002
<b>GPS Antennas</b>	Procom GPS4 top quality GPS antenna (without mount or cable)	100 1022
	GPS Antenna std. with mount & 5m cable (replacement)	300 1002
<b>VHF Antennas</b>	VHF antenna std. with mount & 5 m cable (replacement)	300 1003
<b>Combi Antennas</b>	Comrod AC17 with splitter	100 1025
	AC Marine VHF/GPS-2 combined antenna (incl. splitter)	100 1027

### Inquiries & Orders

**sales@nauticast.com**  
**T +43 1 5237 237 - 400**  
**F +43 1 5237 237 - 150**

